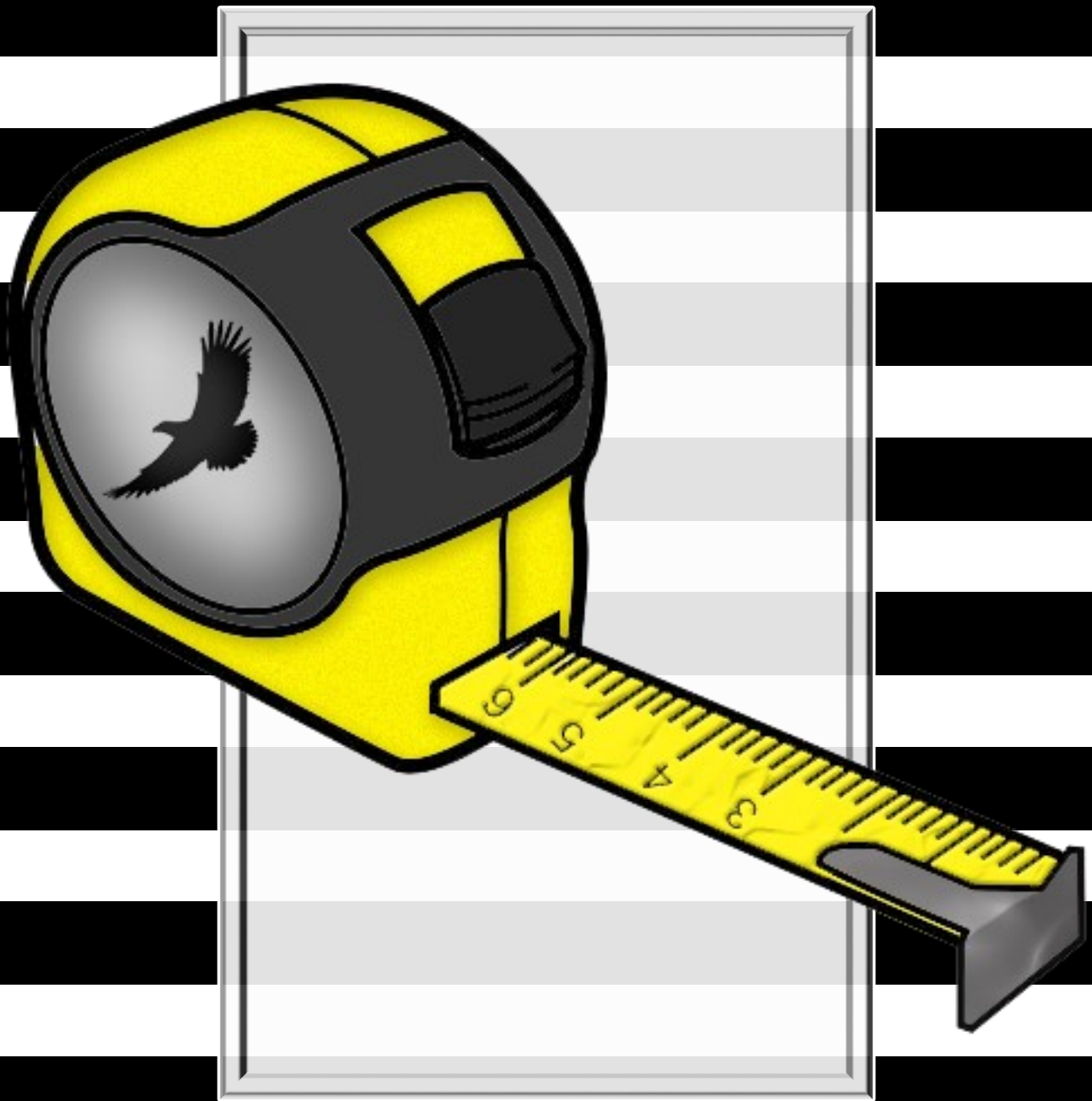


A GUIDE TO MEASURING MY INTERIOR SPACE



SAKALAUKUS INTERIOR DESIGNS

**A GUIDE TO MEASURING
MY INTERIOR SPACE**

**SARAH SAKALAUKUS
SAKALAUKUS INTERIOR DESIGNS**

Copyright © 2016 Sarah Sakalaukus

All rights reserved.

No portion of this guide may be reproduced in any form, electronic or otherwise - except in cases where written permission has been obtained from the author. For permission requests, write to the author at sarah@sakalaukus.design.

The advice in this guide is not to be construed as gospel but merely the author's humble attempt at helping you through her expertise.

www.sakalaukus.design

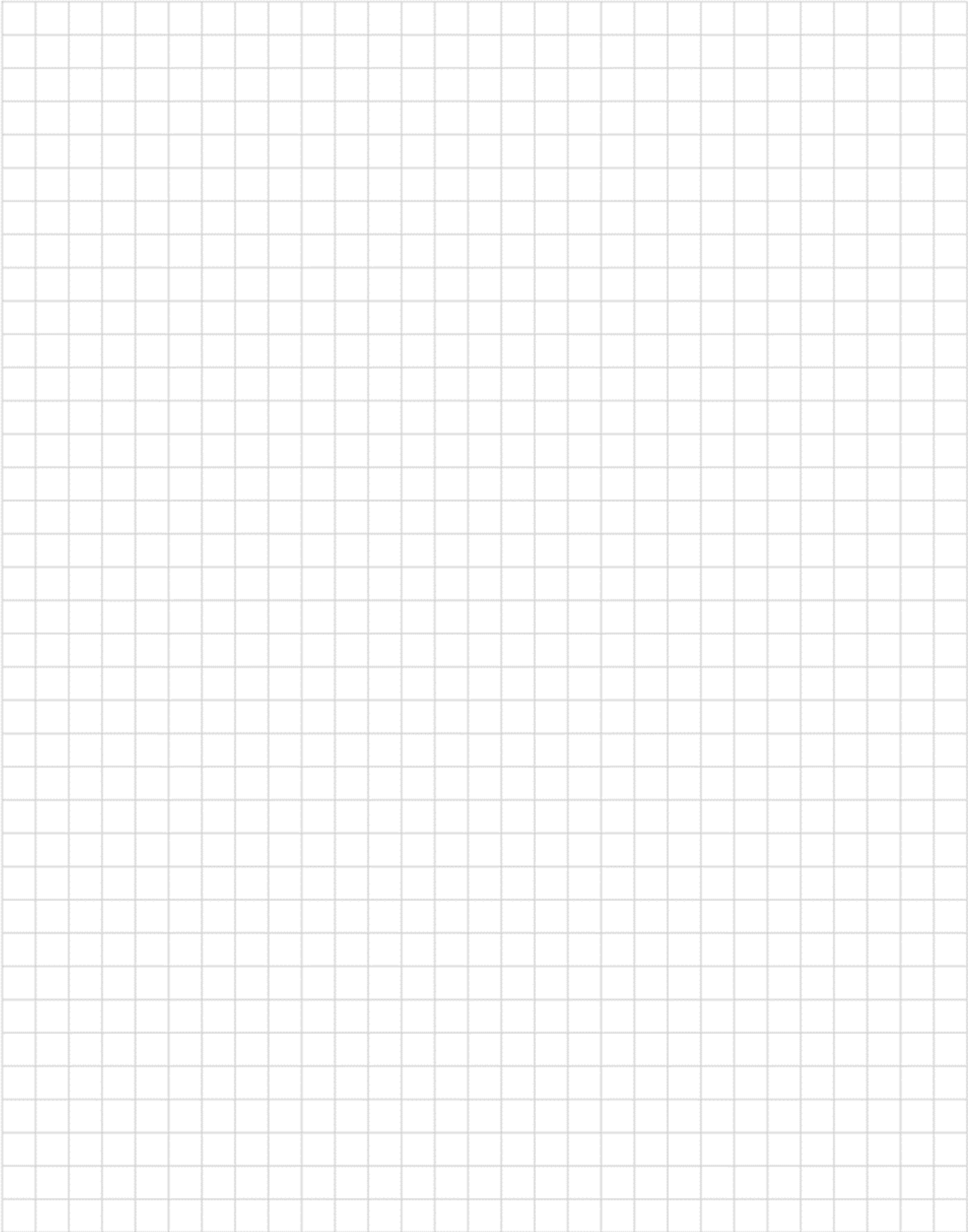
CONTENTS

Tools	5
Grid Paper	6
Tips	7
Notes	8
Draw	9
Measure	12
Photograph	17
Example	21
About	22

TOOLS

- Tape Measurer
- Pencil & Eraser
- Paper (a printable grid can be found on the next page)
- Camera (optional)

Measure Twice. Cut Once.



SAKALAUKUS

INTERIOR DESIGNS



TIPS

- When drawing multiple rooms, keep your back at the same direction throughout each space. For ease, position yourself so that you are facing away from the front door or street at all times. By doing this, each room is positioned at the same cardinal direction and the need for puzzle piecing them together is eliminated.
- Always measure from corner to corner, starting at your left and working around the room clockwise.
- Make the tape measurer work for you. Stand at one corner and feed the tape out to the far corner. (As opposed to placing the end of the tape at one corner and walking the tape down to the next corner.)
- When measuring doors, do not include measurements for casing. Measure only the door itself.
- Pencils are preferred to make for easy erasing. Make sure writing is dark so that it is legible when scanned onto your computer.

NOTES

- Create a list for notes, furniture measurements, and architectural features. Call it your architectural detail list.
- For a complete design, include with your measurements the size (L x W x H) and location (wall # & distance from other features) of windows, doors, wall openings, closets, outlets and other electrical features, built-ins, HVAC features, alcoves, lights, etc.
- If there are any special circumstances about the space, bring them to attention with a note. For example, if your space has no flooring, it should be noted that ceiling height is from a concrete slab to the ceiling.
- Typically, opposite walls are the same length. Always double check.
- Should your design include furniture placement, make notes of width, depth and height for each piece.
- If you're feeling adventurous, add architectural features on your measurement drawing. For instance, a rectangle can represent a window, etc. An example can be found on page 21.

Step 1:
Draw

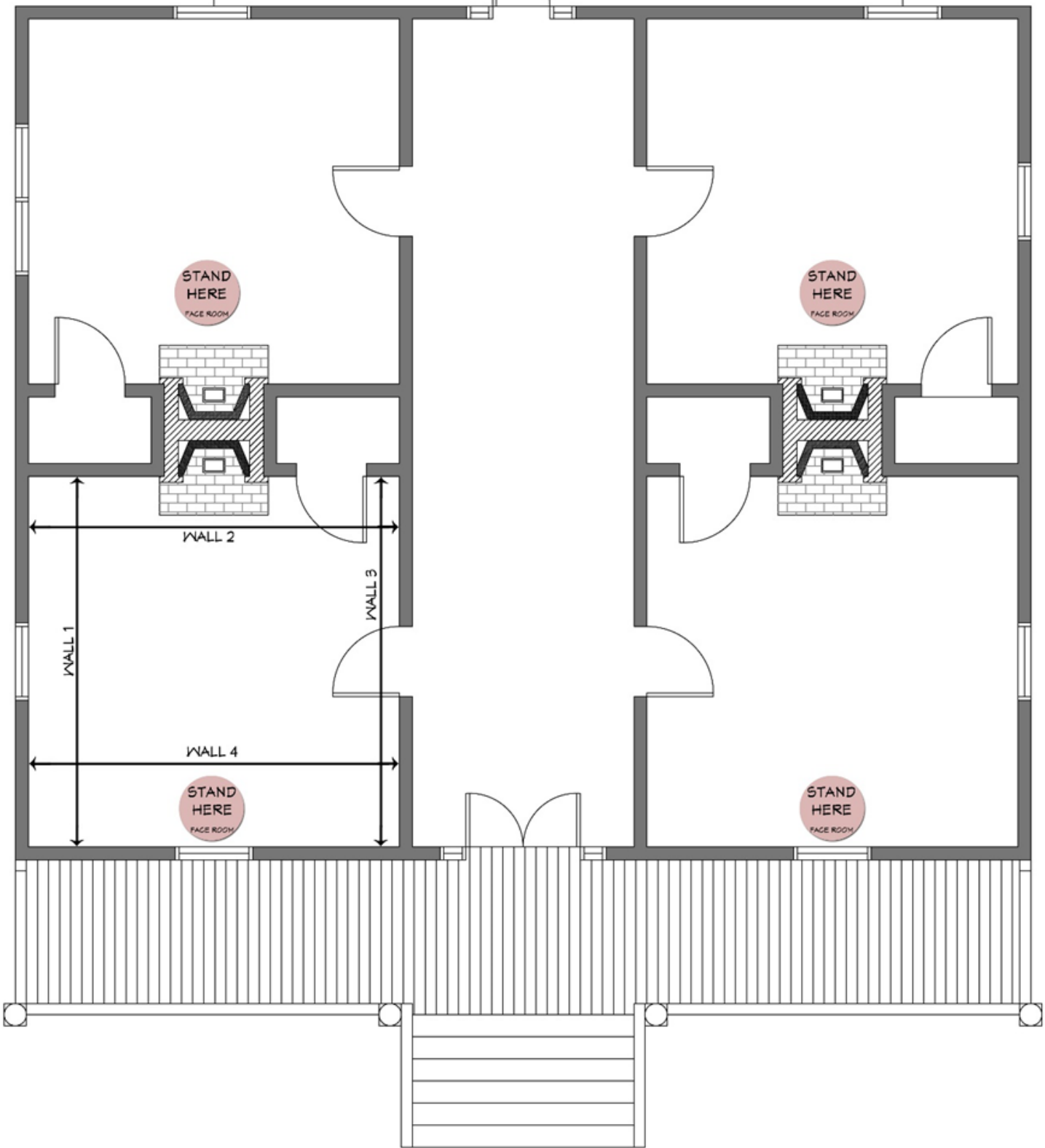


DRAW

- Standing inside the room with your back to the front door or street, use a pencil to draw the first wall which should start at the corner to your left. Move clockwise through the room to complete the drawing. An example of how you should stand in each room can be found on page 11.
- As the image on page 21 shows, please label each wall with a number.
- When the room is drawn, make a list of each wall and number them. Include architectural features. Like this:

Ceiling
Wall 1 - Window
Wall 2 - Door to Closet
 - Fireplace
Wall 3 - Door to Hall
Wall 4 - Window

↑ TO OUT BUILDING





Step 2:
Measure

MEASURE

On your drawing, note the measurement of each wall from corner to corner, as shown on page 21.

On a separate piece of paper, create a list in which to include architectural features. Like this:

Wall 1: 12'

Wall 2: 14"-8"

Wall 3: 12'

Wall 4: 14"-8"

As shown on pages 15 & 16, continue measuring and noting architectural features.

MEASURE

On your list of architectural features
note height, width, and/ or depth of each.

Like this:

- **Ceiling—Height 9'-6"**
- **Wall 1: 12'**
 - Window – Width: 45" Height: 48"**
- **Wall 2: 14'-8"**
 - Fireplace – Width: 54" Depth: 16"**
 - Door to Closet – Width: 36" Height: 6'-8"**
- **Wall 3: 12"**
 - Door to Hall – Width: 36" Height: 6'-8"**
- **Wall 4: 14'-8"**
 - Window – Width: 45" Height: 48"**

MEASURE

- Ceiling—Height 9'-6"
- Wall 1: 12'
 - Window – Width: 45" Height: 48"
Bottom of window: 27" from floor, 32" from Wall 2
- Wall 2: 14'-8"
 - Fireplace – Width: 54" Depth: 16"
Height: to ceiling, 28.5" from Wall 1
 - Door to Closet – Width: 36" Height: 6'-8"
8" from Wall 3
- Wall 3: 12"
 - Door to Hall – Width: 36" Height: 6'-8"
47" from Wall 4
- Wall 4: 14'-8"
 - Window – Width: 45" Height: 48"
Bottom of window: 27" from floor, 32" from Wall 1

An accurate MEASUREMENT
is a sign of
SUCCESS.

MEASURE

- Ceiling—Height 9'-6"
Note: The light is in the center of the room.
- Wall 1: 12'
Window – Width: 45" Height: 48"
Bottom of window: 27" from floor, 32" from Wall 2
- Wall 2: 14'-8"
-Fireplace – Width: 54" Depth: 16"
Height: to ceiling, 28.5" from Wall 1
Note: Mantel- 30" W, 9" D, 6" H & 50" from floor; hearth is 16" above floor & made of stone
-Door to Closet – Width: 36" Height: 6'-8"
8" from Wall 3
- Wall 3: 12"
Door to Hall – Width: 36" Height: 6'-8"
47" from Wall 4
- Wall 4: 14'-8"
Window – Width: 45" Height: 48"
Bottom of window: 27" from floor, 32" from Wall 1

Success is not always a
STRAIGHT LINE.

Step 3:
Photo-
graph



PHOTOGRAPH

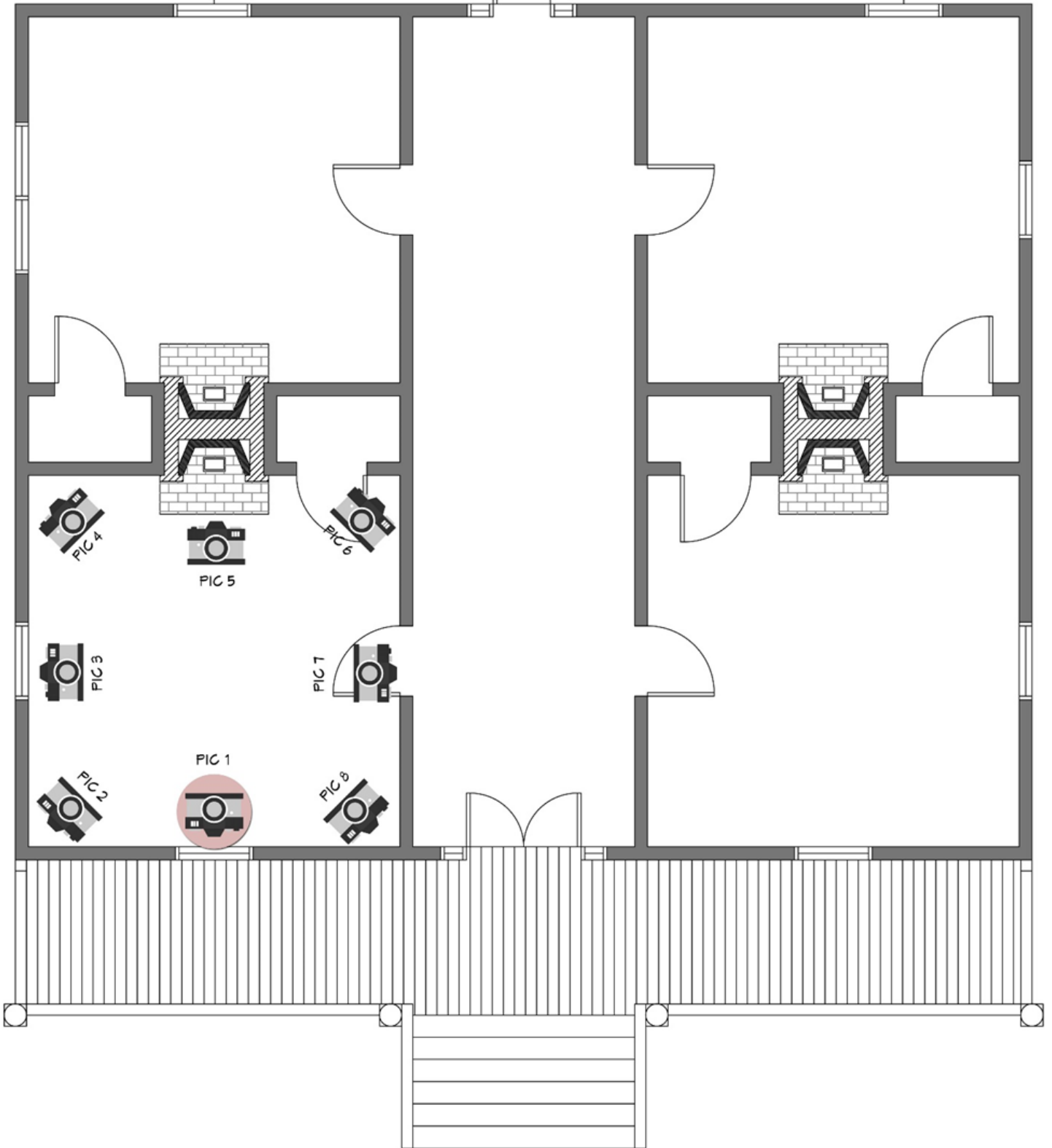
- Remove as much clutter, and people, as possible before taking pictures.
- Some rooms will require midday sun for the picture to tell a thousand words, while others will need to be photographed at dusk with lamps on. Adjust your flash accordingly. The scenario you choose should result in photos without glare.
- Select either vertical or horizontal shots. The goal is to include as much detail about the space as possible.
- Kneeling to shoot upward or climbing a ladder to shoot downward may help you capture the space more effectively than standing or sitting.
- When saving your photographs digitally, it is most helpful to rename your photos with an easily referenced name. For example, `BobSmithLivingRoomPic1.jpg` is self explanatory, whereas `12.13.14_img_120098754.1.jpg` is not.

PHOTOGRAPH

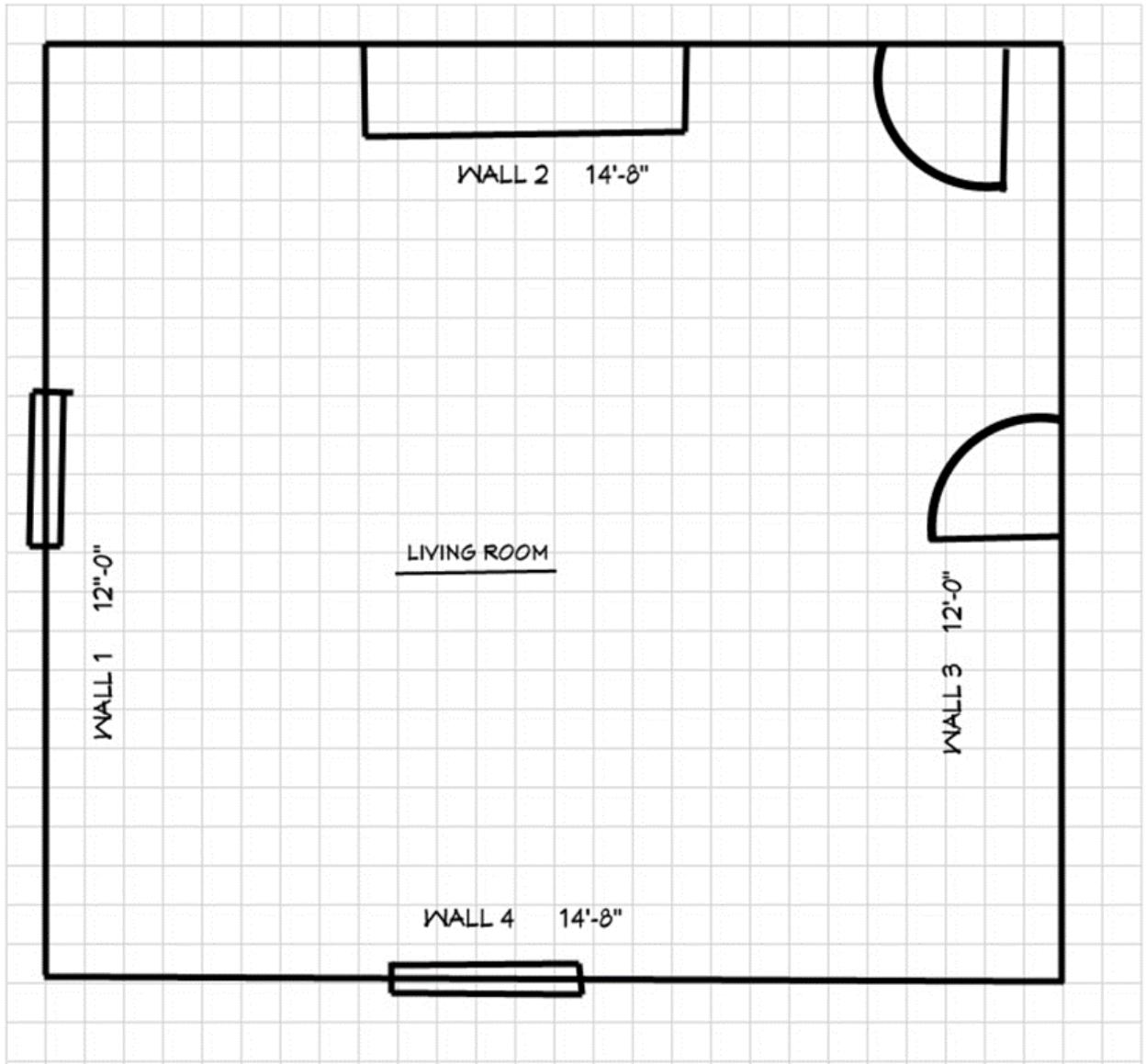
Beginning at the same place in which you drew and measured your room, photograph your room from the middle and corner of each wall. Work your way clockwise around the room as depicted on page 20.

Be sure to capture complete architectural features. For example, if your fireplace is stone all the way to the ceiling, turn your camera so as to capture the whole fireplace in a vertical image.

↑ TO OUT BUILDING



EXAMPLE



NOTES

Ceiling

Height 9'-6"

Note: The light is in the center of the room.

Window - Wall 1

Width: 45" Height: 48"

Bottom of window: 27" from floor, 32" from Wall 2

Window - Wall 4

Width: 45" Height: 48"

Bottom of window: 27" from floor, 32" from Wall 1

Fireplace - Wall 2

Width: 54" Depth: 16"

Height: to ceiling, 28.5" from Wall 1

Note: Mantel is 30" W, 9" D, 6" H and 50" from floor
Hearth is 16" above floor and made of stone

Door to Closet - Wall 2

Width: 36" Height: 6'-8"

8" from Wall 3

Door to Hall - Wall 3

Width: 36" Height: 6'-8"

47" from Wall 4



SAKALAUKUS
INTERIOR DESIGNS

Sakalaukus Interior Designs offers professional and customizable design plans for homeowners and residential DIYers by way of eDesign and traditional design. Sakalaukus Interior Designs is owned and operated by Sarah Sakalaukus.